



## ALL PRODUCTS 2024-8 Over-the-Air Update Procedure for 10.25" Color Touchscreen Display

Product: **All Products**

Bulletin type: **Service**

Bulletin no: **2024-8 (mbs2024-008 en mplug)**

Revision no:

Revision date:

Campaign no.:

Publication date: **December 8, 2023**

Subject: **Over-the-Air Update Procedure for 10.25" Color Touchscreen Display**

MODEL YEAR	MODEL
2023 and up	All models equipped with the 10.25" Color Touchscreen Display

### DESCRIPTION

The 10.25" Color Touchscreen Display has Wi-Fi connectivity to connect to any wireless internet connection and update the software running the vehicle's screen.

**NOTE:** Please note that it is not mandatory to perform the display software updates over-the-air as they are also available in BUDS.



### **Snowmobiles Only - Important Information Before Updating the Software of the Display:**

- Never perform updates while driving the vehicle.
- *2023 Ski-Doo model:* Make sure the vehicle's engine (and display) is turned ON during the process. You may need to press the throttle occasionally to prevent the display from being put on standby.

**NOTE:** The procedure for MY23 of keeping the engine running only needs to be followed for the **first update**. You may follow the MY24 procedure for all subsequent updates.

- *2024 Ski-Doo model:* The vehicle's engine can be turned OFF, but the display still needs to be ON.

- Make sure the vehicle has sufficient battery charge. We recommend installing a charger on the vehicle during the process to ensure the battery has enough charge.

## PROCEDURE

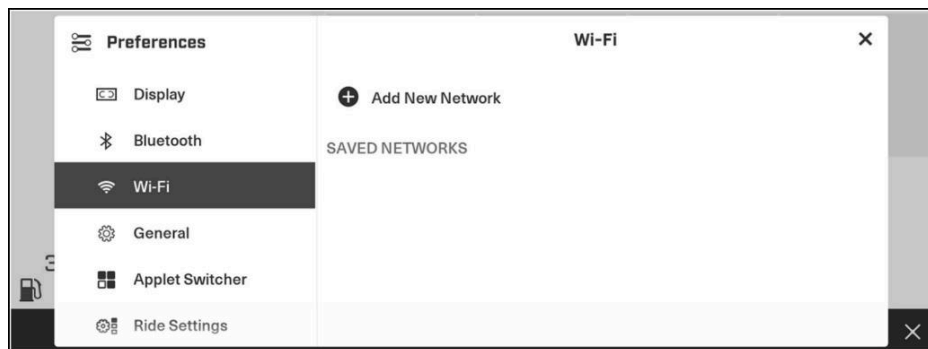
**STEP 1:** Connect the display to a Wi-Fi network.

a) On the main Applet menu, select "Preferences", and then "Wi-Fi" from the list on the left.

b) Then select "Add New Network", find the network you'd like to connect to from the list that appears on screen and enter the password.

If no Wi-Fi network is available near the vehicle, you can share your smartphone cellular network by hotspot (here's how to do it for [Apple](#) and [Android](#) devices). Just note cellular data fees may apply.

The 10.25" touchscreen display will only connect to a secured network.



**STEP 2:** Download and install the new software version.

c) Once connected to Wi-Fi, select "General" from the list on the left.

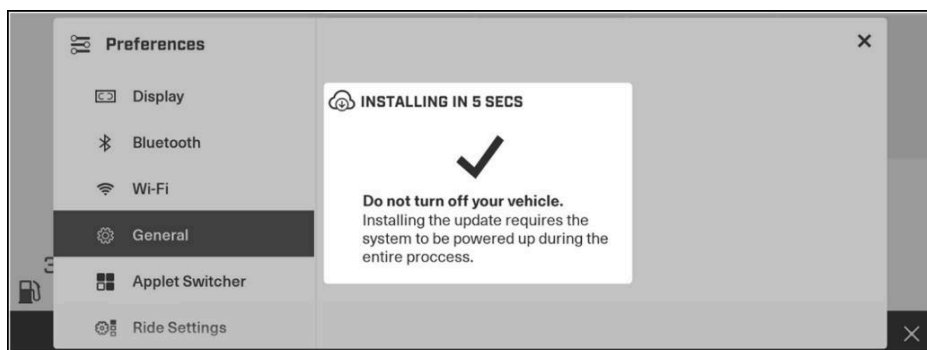
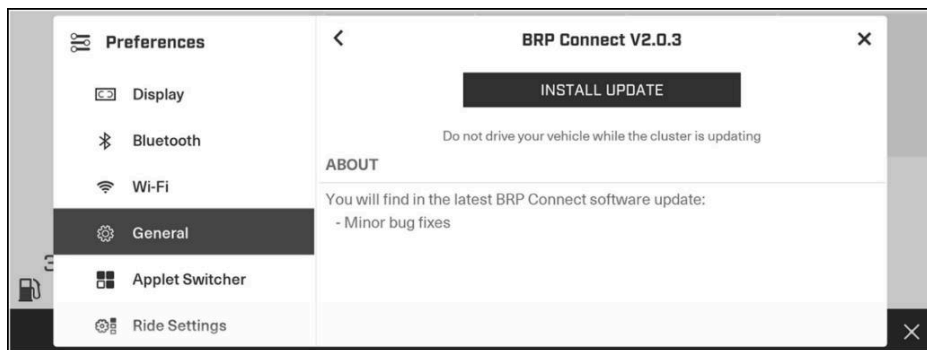
d) Select "Software Update", then the available update (if any).

e) Press "Download Update" and the process will begin.



f) Once the download is completed, press "Install Update".

The download and install process should take about 10-20 minutes (depending on the signal strength of the Internet network).



Once the software update process is completed, the display will reboot, and your customers will be equipped with all the latest capabilities for their next adventures.

**NOTE:** This information is already available to the customers on the "Owner Zone" of the Ski-Doo website.