



New temporary option in BUDS to reset/clear cluster as new_139510

Summary:

This new temporary reset option in BUDS will allow to flash the cluster for MY21 and MY22 units only.

Type:

Общий

TST Detail:


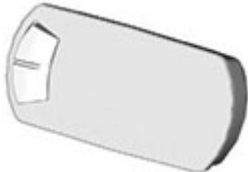


Problem:


The issue is some clusters have been pulled from other product lines and sent in the network for delayed components without them being fully reset as new.

While transferring the information to the "new blank" ECM causes improper programming, this new temporary reset option in BUDS will allow flashing the cluster with the proper software needed for the unit.

This process only applies to MY21 and MY22 units with delayed components campaigns

Resetting Cluster as service component compatibility

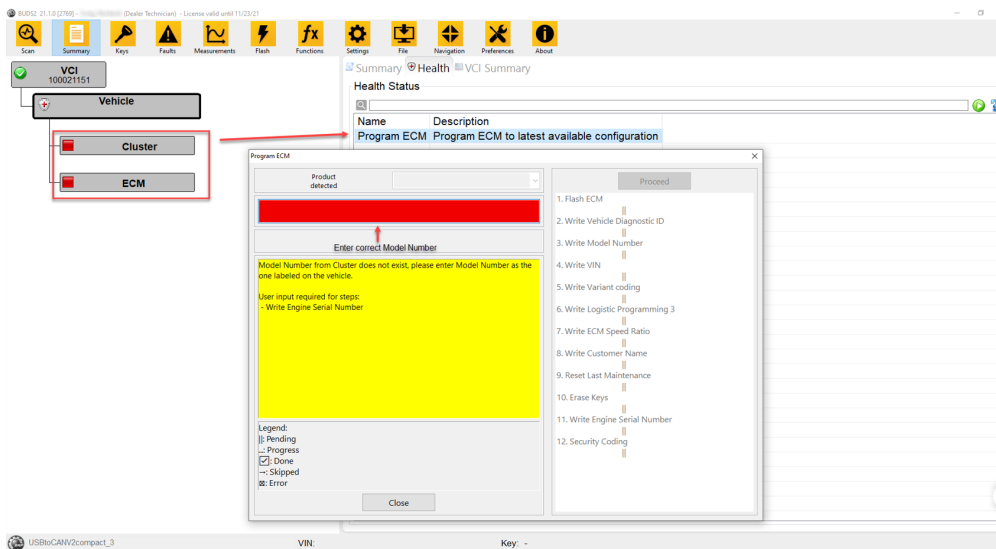
Modules	Products applicable
Compact Digital Gauge 	Ski-Doo ONLY MY21 MY22
Small compact cluster 	ATV-SSV-PWC-Ski-Doo ONLY MY21 MY22
Mid-Range compact cluster 	ATV-SSV-PWC-Ski-Doo ONLY MY21 MY22
Hi-End dual-screen color cluster 	Can not be reset DO NOT USE RESET FUNCTION

Modules	Products applicable
	

Solution:

Steps on how to reset the cluster

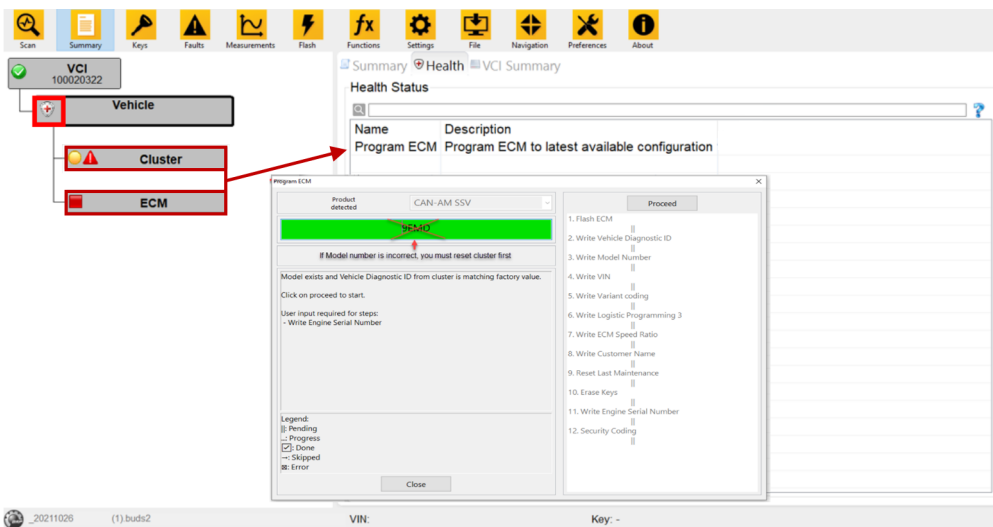
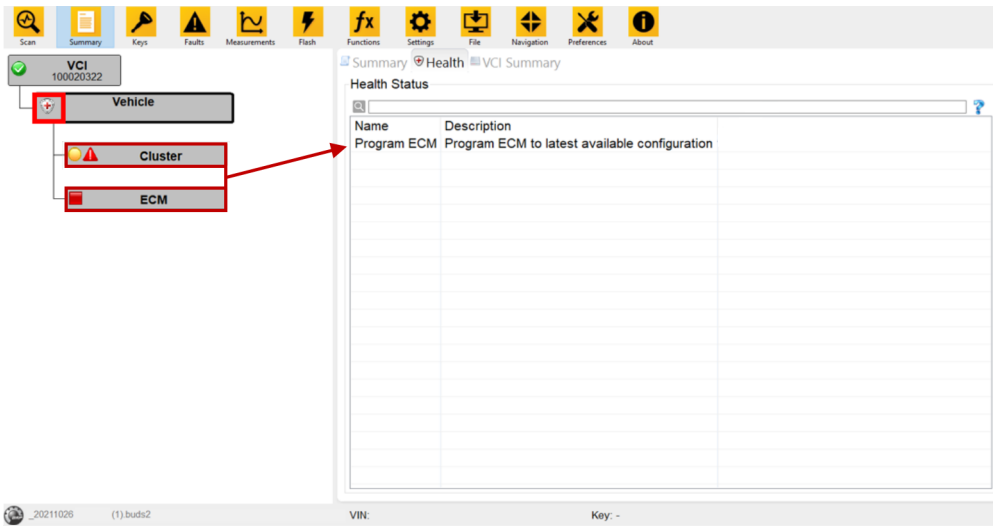
- Always download the latest version of BUDS
- Connect unit
- Go to the Program ECM to last available configuration and confirm it is the correct SKU (model #)



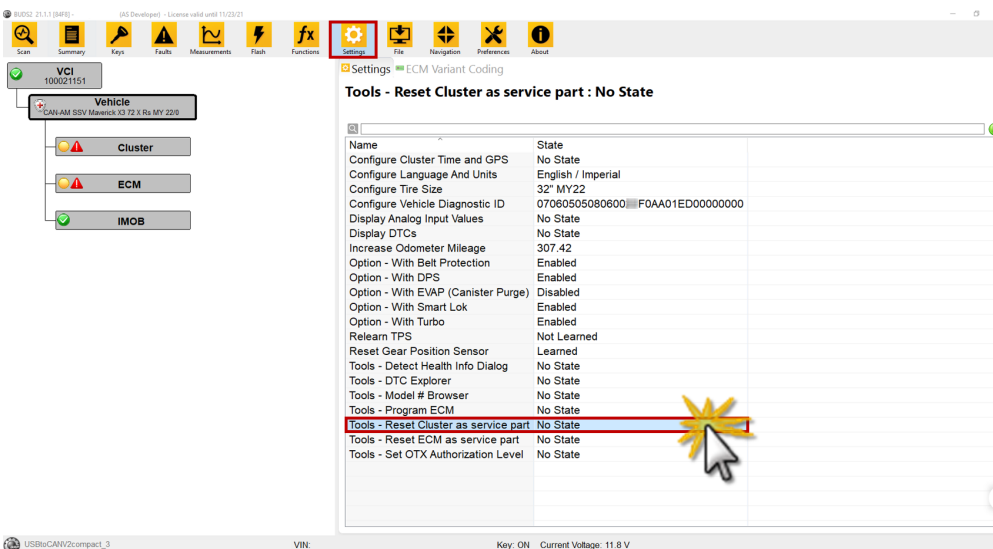
Note:

The ECM needs to be in Boot mode and then needs to be programmed first before the cluster knows what file to install. Once the ECM is finished uploading close the window then Rescan the unit " a red lightning bolt flash icon appears for the cluster tab

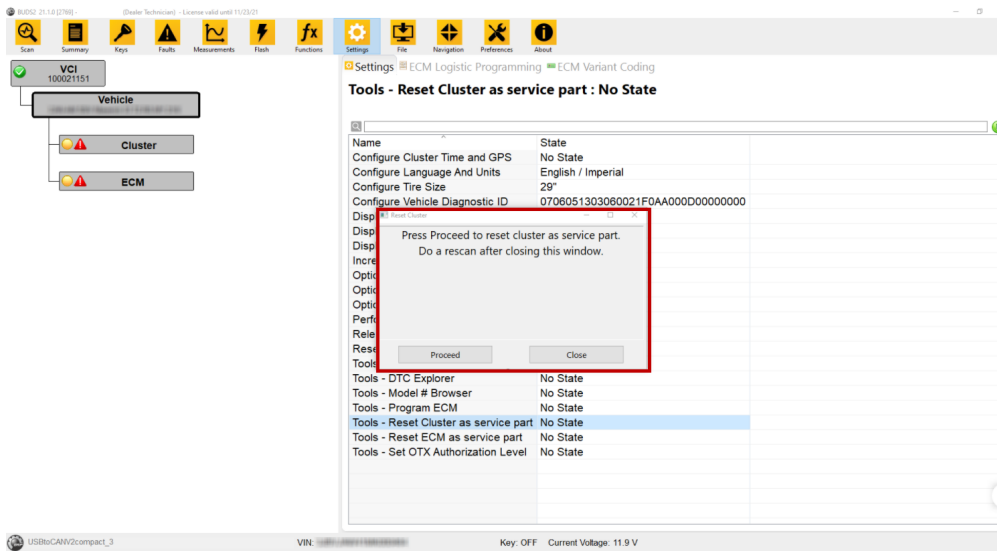
- Start Program ECM from Health Status



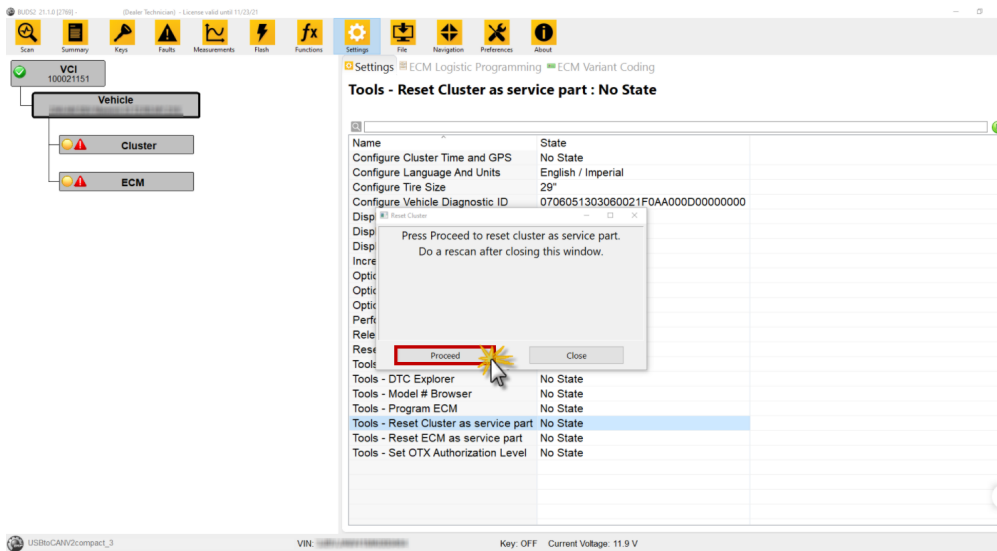
- Go to the settings page
- Select "Reset cluster as a service part."
- Double click on the function to start



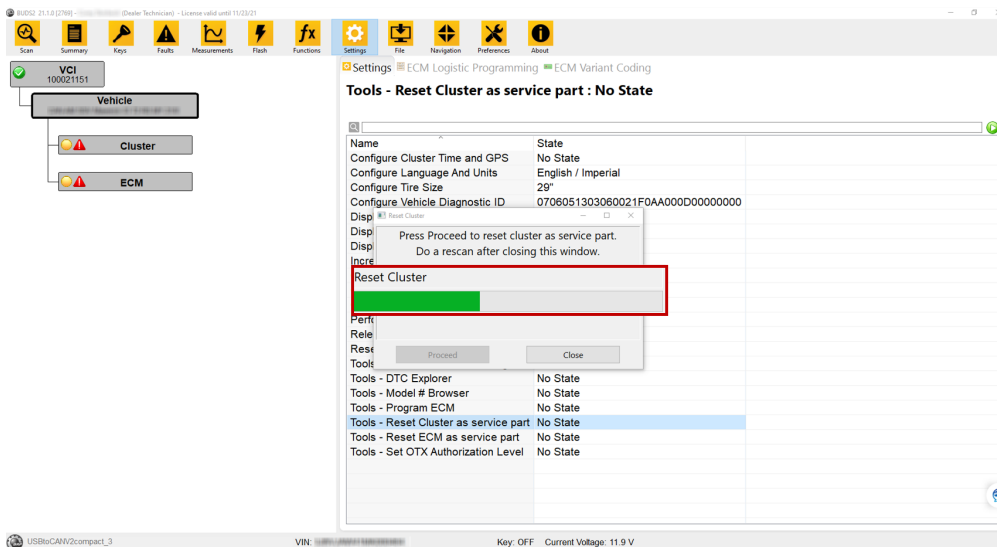
- Window will open



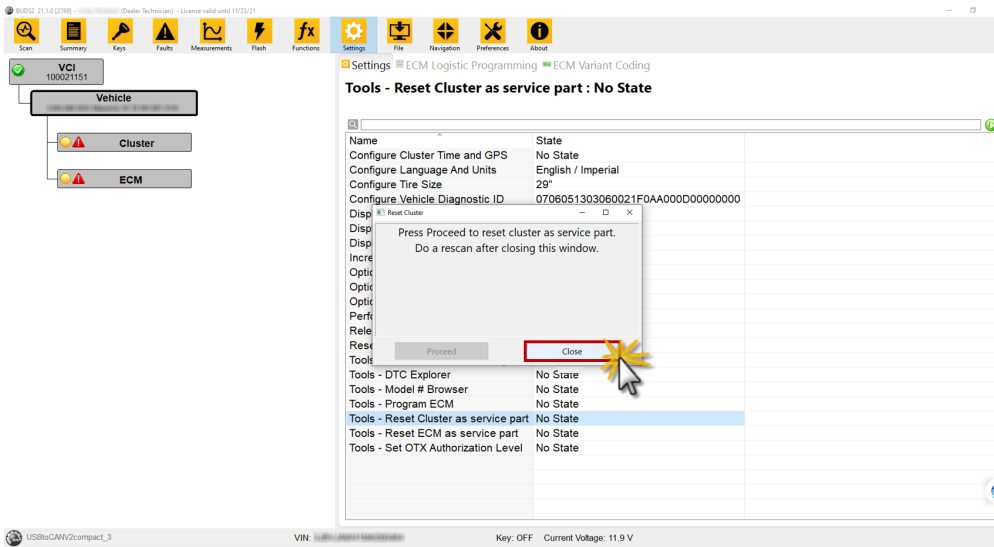
- Click on Proceed



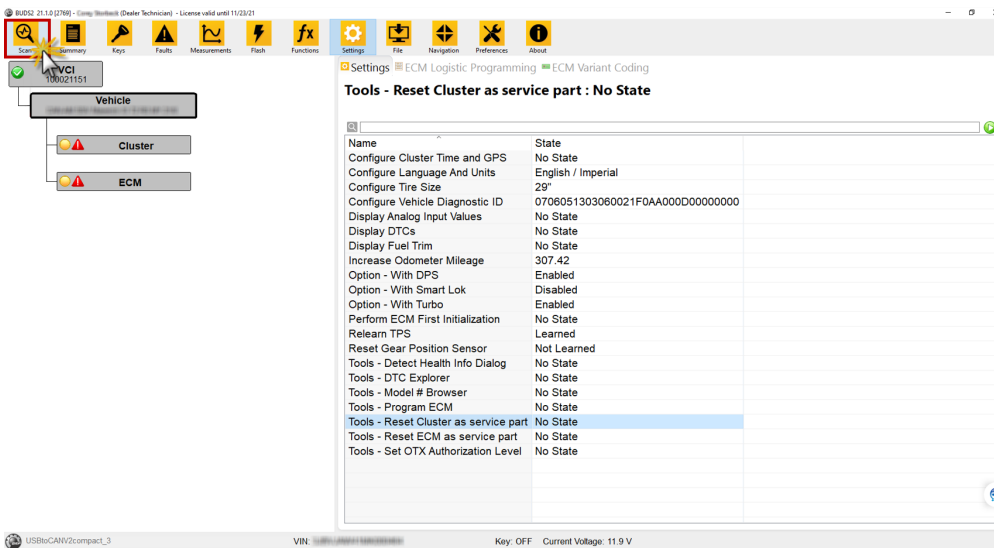
- Download started



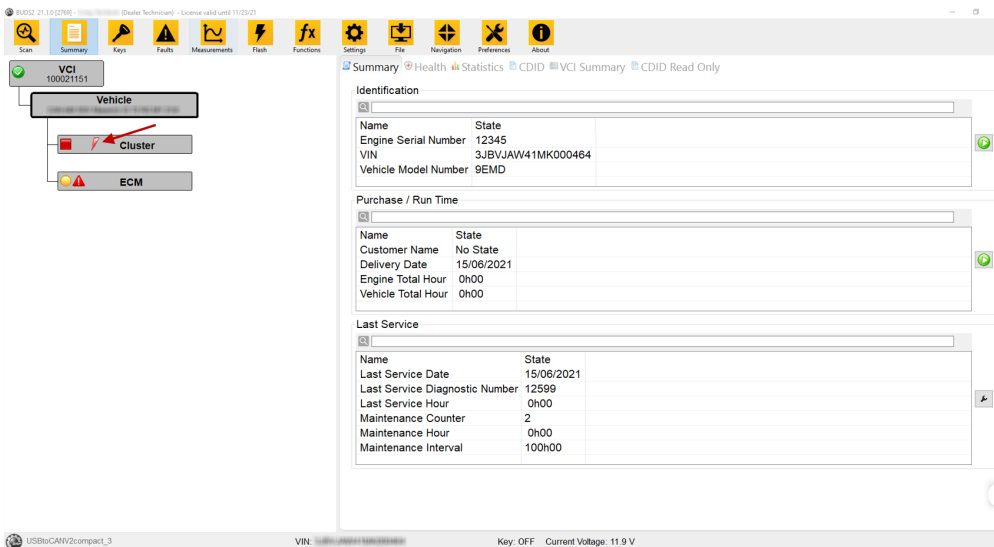
- Once finished close the window



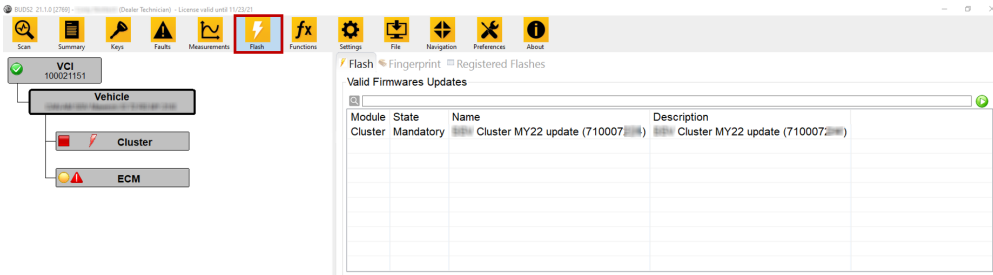
- Rescan the unit



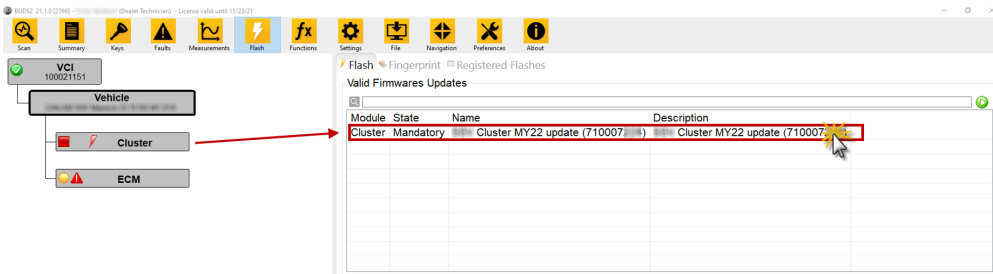
- A red lightning bolt will be displayed next to the cluster



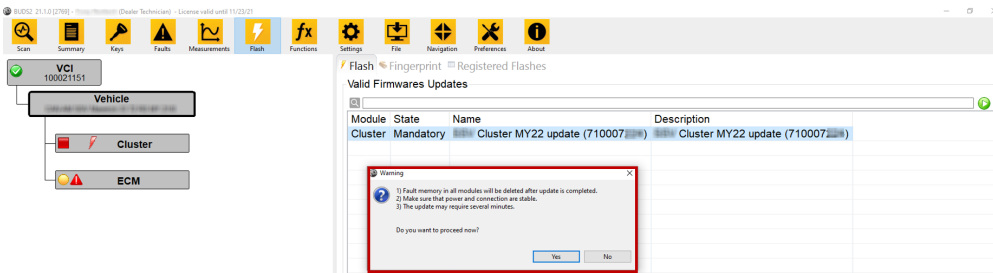
- Click on the flash tab



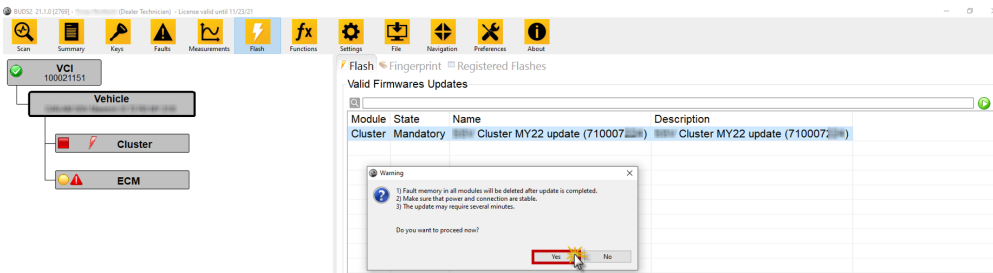
- Double click on the current update software for the cluster



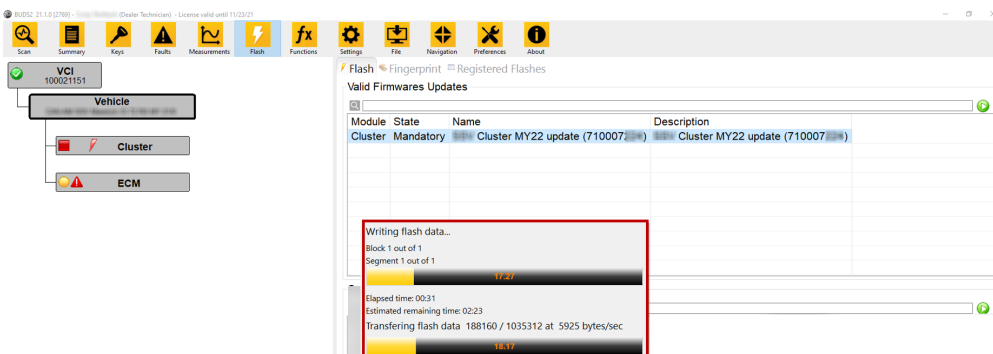
- Warning Window opens



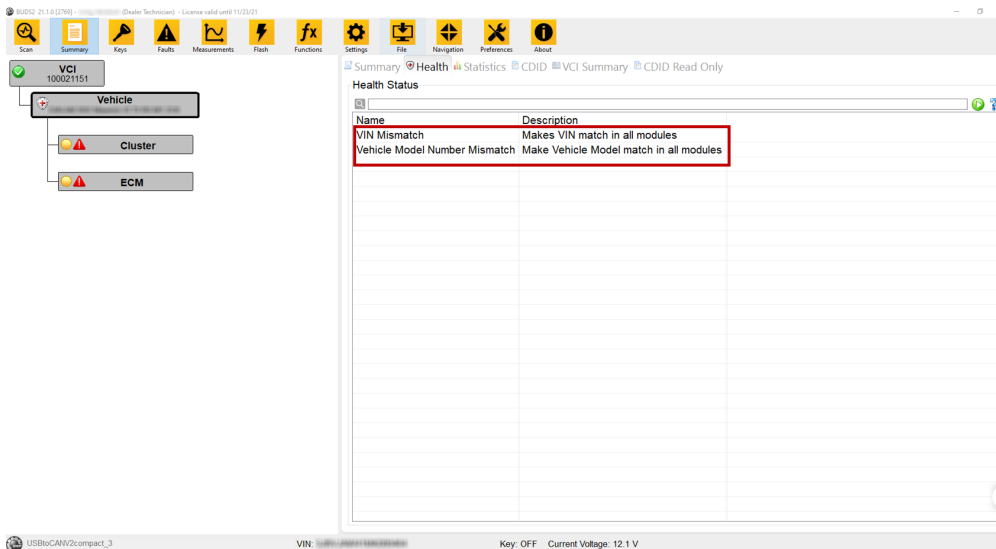
- Click yes to start download



- Download started



- Once complete you may need to match the VIN and or Model numbers between modules



If the Cluster is not in boot and the SKU is missing

- Program ECM and Enter the SKU manually
- Wait for Program ECM to complete
- Scan
- Everything should be fine, no mismatch

If the Cluster is not in boot and the SKU (model #) is valid but not for that vehicle

- Reset Cluster As Service Part
- Scan
- Program ECM and Enter the SKU (model#) manually
- Wait for Program ECM to complete
- Scan
- Flash the Cluster
- Model Number Re-Write

See TST 139447 for programming a Blank ECM on a 4-stroke model has a slight modification due to the delayed components issue, you now need to enter the units correct model number to start/proceed with the programming process and TST 139448 for Updating a digital display that shows DESS" Scrolls "VIN DOES NOT MATCH"

Attachment:

First Published By: on 2021-11-16
Last Modified By: on 2021-11-25