

Upgrade Spark 60 hp up to 90 hp with Megatech.

1. Run BUDS E3.8.2 (or higher) with privileges ***Dealer PWC & Boats*** and make all updates which BUDS will offer.
2. Write Data.
3. Save the MPEM document (menu BUDS) and close BUDS.
4. Run BUDS with privileges ***Megatech***.
5. Change the model's number to number of model 90hp, but the same year as your vehicle 60hp.

Example for Spark 2014 Engine ACE 900 HO = **00060EA00** (SPARK 903 NA, Orange/White, Base, 1+1. North America (CU). Engine ACE **900 HO**):

The screenshot shows the BUDS software interface. At the top, there are three buttons: "Read Data", "Write Data", and "Stop". Below these is a navigation bar with "Vehicle", "Keys", and "Settings". The "Vehicle" section is active, displaying an "Identification" form with the following fields:

Vehicle (VIN):	YDV00000C314
Engine:	M
Model:	00060EA00

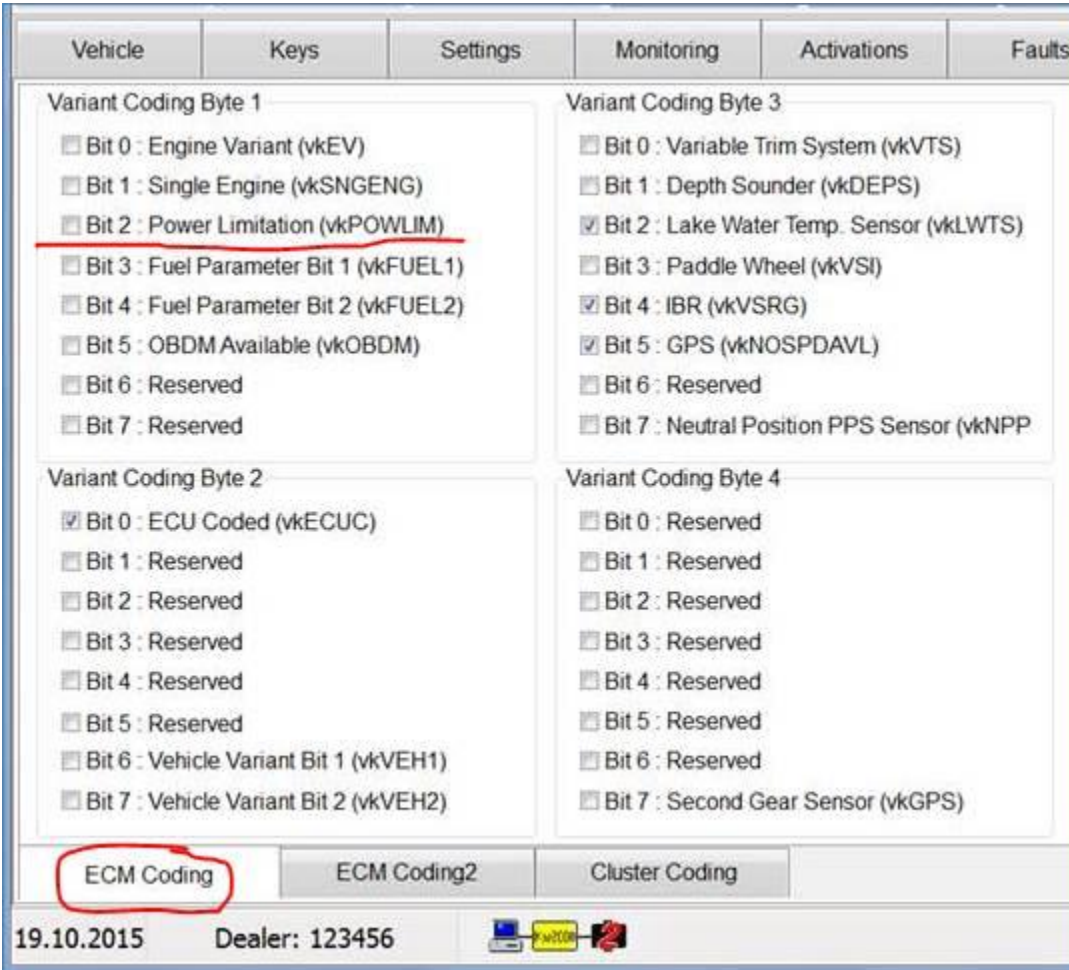
The "Model" field value "00060EA00" is circled in red.

The list of available models you can see here:

<http://epc.brp.com/Index.aspx?lang=E&s1=3e84d81a-7e21-4e2b-ba87-350833657f2e>

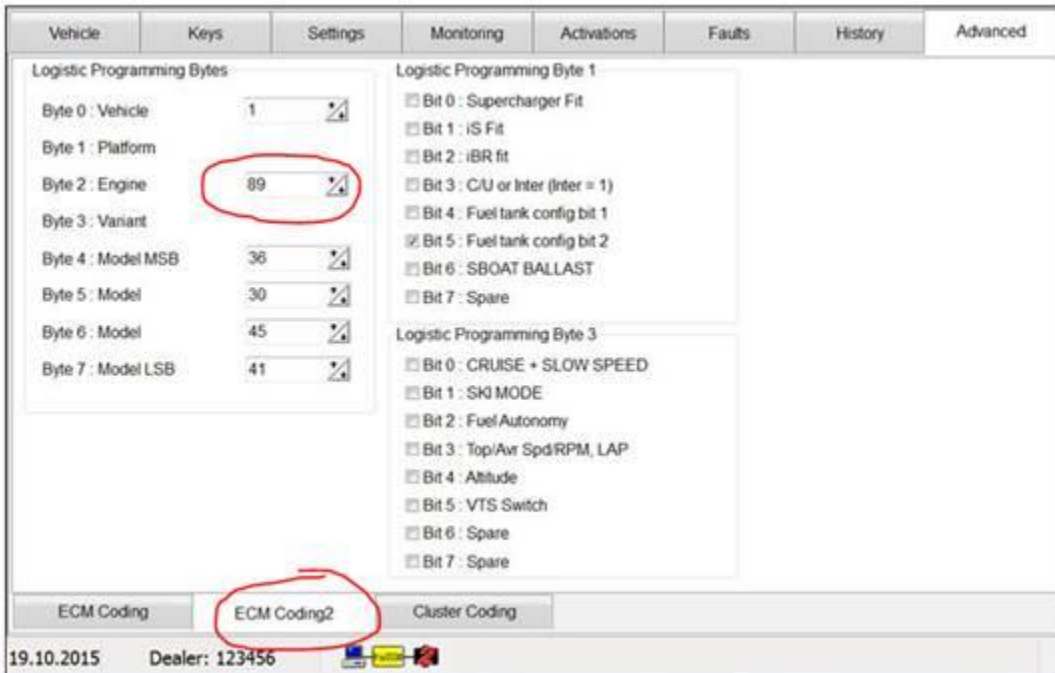
6. Open tab Advanced – ECM Coding.

Uncheck the parameter "Power Limitation (vkPOWLIM)":



7. Write Data.

8. Open tab Advanced – ECM Coding2 and change the parameter Byte 2: Engine to 89.



9. Close BUDS.
10. Run BUDS W3.8.2 (or higher) with privileges **Dealer PWC & Boats** and make all updates (if BUDS will offer).
11. Check/erase faults (errors) if exist.
12. Reset throttle position.
13. Write Data.
14. Close BUDS.